

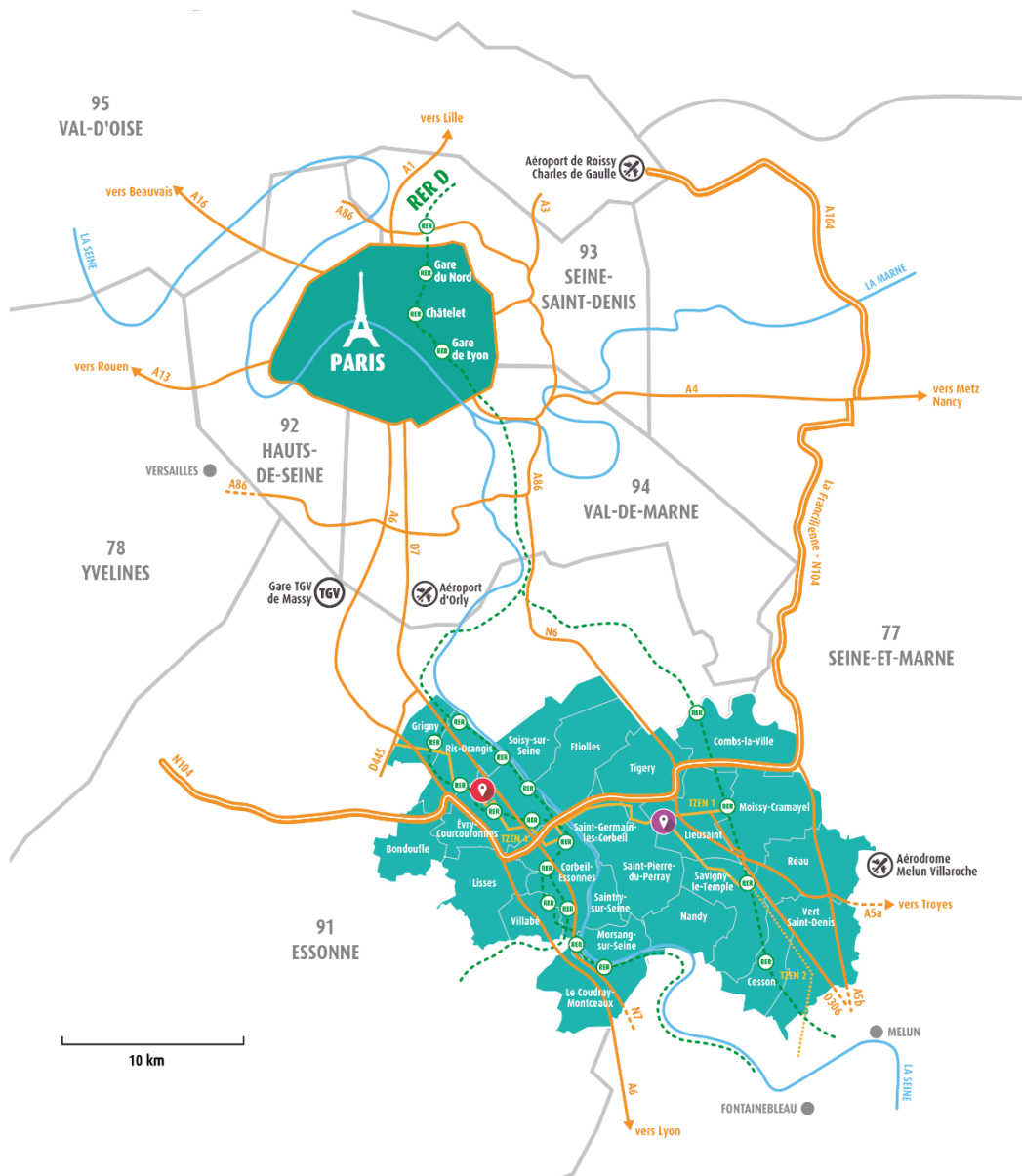
November

2024

Territory OF POSSIBILITIES

Contents

- 1 A GENERAL PRESENTATION of **Grand Paris Sud**
- 2 THE ECONOMIC IDENTITY of **the Territory**
- 3 **FIELDS of Excellence**
- 4 RICH TRAINING, **Research and Innovation Environment**
- 5 **CORPORATE Services**



Accessibility



International airport :
 20 mn to Orly (Paris-Orly)
 40 mn to CDG (Paris-Charles de Gaulle)
 1h20 from London, 1h20 from Frankfurt,
 1h30 from Munich



European highways A6, A5 and A4, and regional ringroad N104.



2 hours from Brussels, 3 hours from London,
 2 and a half hours from Lyon, direct
 TGV-connections from Paris to Frankfurt,
 Stuttgart, Munich, Zurich and Milan.



17 stations
 RER D – 35 mn to Paris Gare de Lyon

Grand Paris Sud is located 30 mn from Paris

23
TOWNS
 15 in Essonne
 8 in Seine-et-Marne



357,664
INHABITANTS

+ 0.6%/year between 2014 and 2020



148,445
HOUSING



Over **14,000** housing to be delivered by 2028



25,000
STUDENTS



31,118
COMPANIES



148,503
JOBS

Living in Grand Paris Sud



REGIONAL SHOPPING MALLS, including :

WESTFIELD CARRÉ SÉNART :
15,5 MILLION VISITORS

SPOT EVRY : 18 MILLION VISITORS



6
GOLF COURSES



630
SPORTS CLUBS



2
NATIONAL THEATRES



31
HISTORIC SITES

AS WELL AS CULTURAL HERITAGE,
SUCH AS THE CASTLES IN VAUX-LE-VICOMTE AND FONTAINELEAU



261 km
CYCLING FACILITIES



49,6 %
NATURAL SPACES AND AGRICULTURAL
ROUGEAU, SENART AND BREVIANDE FORESTS



20 km
OF SEINE

The international action of Grand Paris Sud and its municipalities



Grand Paris Sud has been carrying out cooperation projects in connection with Mauritania since 1986, Mali since 1990 and Senegal since 2010. The agglomeration is currently a partner of the Mauritanian Association of Southern Municipalities and has a cooperation agreement with the city of Kayes (1990, Mali), the District of Bamako (2010, Mali), the city of Dakar (2010, Senegal) and the region of Nouakchott (2011, Mauritania).



Grand Paris Sud also has significant experience on a European level, both in seeking funding from the European Union and in participating in projects for the exchange of experiences / innovation in partnership with European cities.

Lastly, Grand Paris Sud carries out education measures for international citizenship in conjunction with local actors, cultural and socio-educational facilities in the area.

The engagement of Grand Paris Sud in international networks





Parc d'activités du Parc du Levant - Lieusaint - DR Epa Communication



Carré Haussmann - Evry-Courcouronnes - DR

THE ECONOMIC IDENTITY Of the Territory



31,118
COMPANIES

Strong Economy

More than 4,300 business creations a year and 60 industrial parks. Chosen by **companies' headquarters** (Safran Aircraft Engines, Accor, Arianespace...), **international companies** (UPS, Coca-Cola, Illumina...) and a **dense SME's network**.

C50 : A club dedicated to major companies



148,503
JOBS




Diversified Business

With a wide activity range: retail, aeronautics, computer systems, electronics, logistics, mechanics, robotics, smart building, software, services, life sciences...

+ 46 % institutions between 2014 and 2020 (+ 40 % in Ile-de-France)

5,171 new corporates in 2022 (+ 18 % compared to 2020)

A density of international companies :

- Accor 
- Coca-Cola 
- Fanuc Robotics 
- Illumina «Solution Center»  /Genopole 
- Iris Ohyama 
- Safran Aircraft Engines 
- UPS 
- X-Fab 





59
BUSINESS
PARCS



190 ha
OF LANDS
MADE
AVAILABLE FOR
ECONOMIC
GROWTH



560,000 m²
BUSINESS PREMISES



1 500 000 m²
OFFICES



3 000 000 m²
WHAREHOUSES



Commercial offer: key figures



More than **620,000 m²** of retail space GLA

Which equals a **commercial density of 1,8 m²/habitant** (contre 0,8 en Île-de-France)



4 poles of regional focus which include two main poles* : SPOT Evry, Westfield Carré Sénart, Marques Avenue A6* and Zone commerciale Villabé/IKEA A6*.

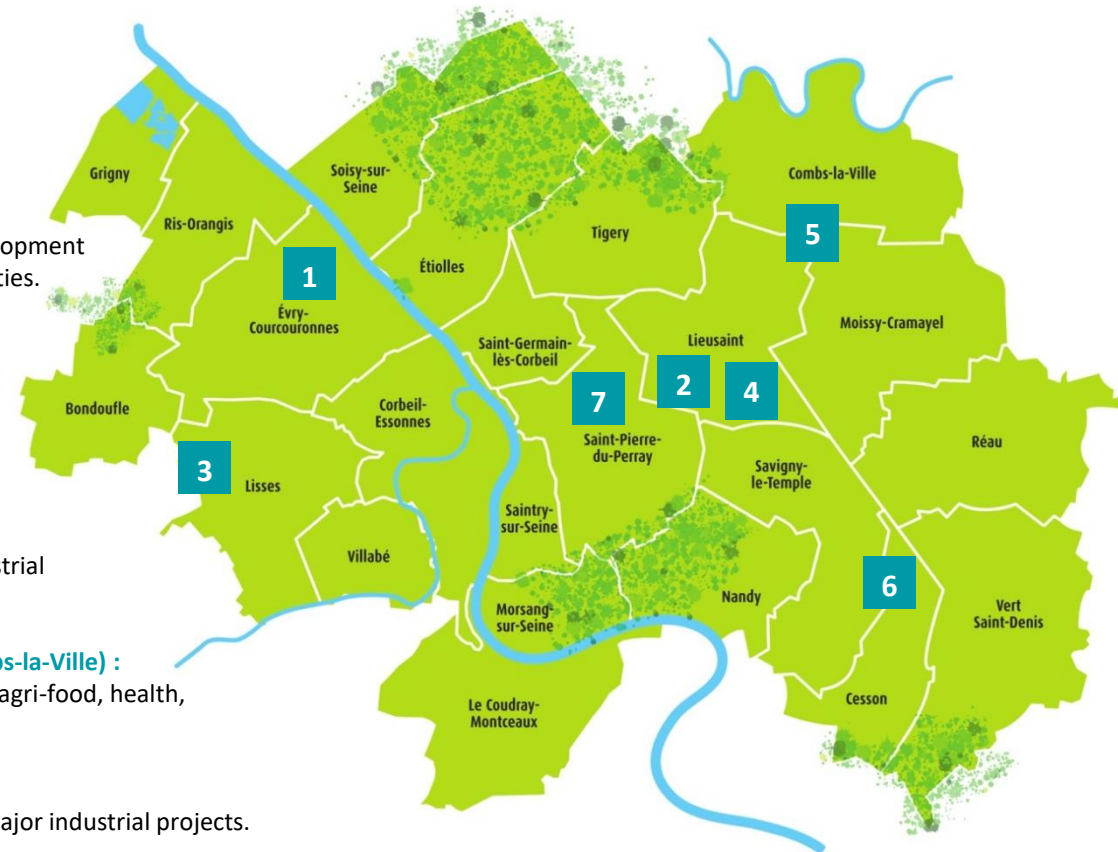


4 leaders of e-commerce :
Cdiscount, Zalando, Sarenza and Amazon

190 Ha of lands for economic purposes

The agglomeration of Grand Paris Sud offers nearly 190 ha of land for economic purposes which are immediately available in its retail parks

- 1 Evry-Courcouronnes :**
Nearly 14 ha available on the former CACF site (4.6 ha), the Thoison site on Genopole (1 ha) and the RCU04 site (1.70 ha), les Aunettes (3.20 ha)...
- 2 Carré Sénart :**
+ More than 15 ha immediately available on this major urban development which already boasts a wide range of services and services and facilities.
- 3 Léonard of Vinci business park in Lisses :**
7.5 ha available in a high-quality landscaped setting, with 8 lots ranging in size from 1,600 to 2,600 m² in the LEO LAB sector – a 6,010 m² lot and a 15,185 m² lot suitable for the development of “hi-tech” and “middle-tech” activities.
- 4 PAE of Levant in Lieusaint :**
15 ha available with lots from 5,000 m² to 25,000m² to be for industrial and production activities.
- 5 Ecopôle of Sénart business park (Lieusaint/Moissy-Cramayel/Combs-la-Ville) :**
40 ha available for activities linked to the environmental transition, agri-food, health, industry... with lots starting at 5,000 m².
- 6 ZAC du Bois/Saint-Pères in Cesson/Savigny-le-Temple :**
An 8-hectare lot that can be divided to accommodate one or two major industrial projects.
- 7 PAE La Clé de Saint-Pierre in Saint-Pierre-du-Perray :**
1.6 ha dedicated to SMI/SME, with lots starting at 4,000 m².



Sites labeled «Turnkey sites France 2030» in Grand Paris Sud

These sites, in Essonne and Seine-et-Marne revealing the industrial potential of the agglomeration, are among the 55 winners of the national label France 2030.

→ **The 17 ha "Lu" site in Ris-Orangis** is served by a large road network and the new T12 tram. This location will allow it to host activities with high added value, creating jobs. Spatial organization schemes have shown the potential of this site and its ability to adapt to the projects that could be hosted. The field is also located in the wider perimeter of the former Ris-Orangis Hippodrome, for which the Grand Paris Sud agglomeration is studying the project of a national pole dedicated to sport-health

Site maturity: 2025-2030

→ **The Bois-Sauvage site in Evry-Courcouronnes** has an area of 5 ha. Located north of Evry, near Ris-Orangis, near the RN7, this parcel could be available by 2025-2027. This site is part of a global approach to the development of bio-industry, in connection with the Genopole. The objective is to complete the existing real estate offer and host bio-production activities.

Site maturity: 2025-2027

→ **The Paris/Villaroche site**, with an area of 177 ha, including about 150 hectares in Réau, is the largest industrial land reserve in Ile-de-France. It has the potential to welcome a large account on a single plot of 100 ha, in the immediate vicinity of the aeronautical pole already formed around the establishment of SAFRAN.

Site maturity: 2027-2030





1

**FACTORY 4.0 ELCIMAÏ
BOIS DES ST-PERES INDUSTRIAL PARK**
O.I.N. Sénart – Industry
5,3 ha Ready to Use



2

LISSES – LÉONARD DE VINCI
Headquarters – High-tech and
middle-tech activities
7,5 ha Ready to Use



3

**EVRY-COURCOURONNES –
THOISON GENOPOLE**
Biotechs and Pharma
Headquarters and laboratories
1 ha Ready to Use



4

**EVRY- COURCOURONNES –
BOIS SAUVAGE
(the former CACF)**
Biotechs, Pharma industry
Healthcare industry
4,6 ha Ready to use



5

PLOT X1 – SENART ECOPOLE PARK
O.I.N. Sénart – Industry
8 ha Ready to Use



6

PLOT 10H – LEVANT INTERNATIONAL PARK
O.I.N. Sénart – Industry
2,4 ha Ready to Use

Focus on the turnkey industrial sites labeled «Rebound Pack»



1

FACTORY 4.0 ELCIMAÏ
BOIS DES ST PERES INDUSTRIAL PARK
O.I.N. Sénart – Industry
5,3 ha Ready to Use



2

PLOT 10H
LEVANT INTERNATIONAL PARK
O.I.N. Sénart – Industry
2,4 ha Ready to Use



3

X-FAB INNOVATION CAMPUS
Nanotechnologies
LE COUDRAY-MONTCEAUX/CORBEIL-ESSONNES



4

LISSES – LÉONARD DE VINCI
Headquarters – High-tech and
middle-tech activities
7,5 ha Ready to Use



Bioeconomy, Health & Genomics



Sports, Hobbies and Well-being



Aeronautics and Aerospace sectors



Digitalization and Robotics



Supply chain & E-commerce innovation



Eco-activities



FIELDS of Excellence

Bioeconomy, Health & Genomics : Genopole



Ambitious projects :

- Continuation of the life pole
- The extension of Yposkesi's factory
- The development of an operation on the site of ex CACF (4,6 ha)



AFM T  LETHON

SUPPORT GROUPS
FOR PATIENTS AFFECTED
BY GENETIC DISORDERS
AND THEIR FAMILIES

200,000 VOLUNTEERS

53,000 LOCAL SUPPORT GROUPS

5 M DE FRENCH PEOPLE INVOLVED



GENOPOLE

1st EUROPEAN
BIO-CLUSTER

65 COMPANIES

17 RESEARCH LABORATORIES

25 TECHNICAL PLATFORMS

1,500 RESEARCHERS

2,659 DIRECT JOBS

5 CAMPUS/115,000 M² OF BUSINESS PARKS

OFFICES AND LABORATORIES L1/L2

1 CERTIFIED ANIMAL FACILITY



YPOSKESI

1st FRENCH PHARMACEUTICAL
INDUSTRIAL DEDICATED TO THE
PRODUCTION OF INNOVATIVE
THERAPY DRUGS



Genopole, a founding member of the MEDICEN Paris Region competitiveness cluster



Sports, Hobbies and Well-being

An innovative and sustainable urban and economic project around sport, health, leisure and well-being on the site of the former LU, Bobin, Bois de l'Epine de Ris-Orangis and Bondoufle racecourse:

200 Hectares controlled by the public authorities for a territorial project intended to create a new economy.

- **Research dimension:** improving high-level sports performance thanks to scientific research.
- **Economic dimension:** attract and encourage the emergence of innovative companies in the sector.
- **Formative dimension:** develop an innovative training network for sports' professions.
- **Unifying dimension:** co-building the "sports campus".



The Grand Paris Sport Cluster has a shared ambition: to make the Paris 2024 Olympics and Paralympics an opportunity to build together a sport nation and make our territories a field of excellence that will combine training, economy, sport and science. Date of creation : 2017

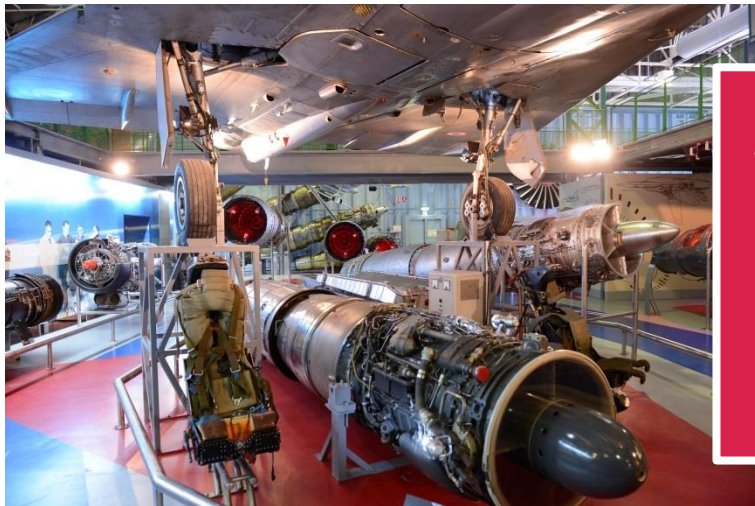


Aeronautics and Aerospace sectors

Paris\Villaroche, major Paris Region industrial cluster, is located 45mn from Paris downtown.

It is next to Melun-Villaroche airport, and hosts several technological companies such as JPB Système, SAFRAN Aircraft engines, Zodiac.

Over 8,000 people work in this aeronautic and technologic cluster, in several fields such as **industrial mechanics, connected industry and robotics**. It is partner of «AsTech Paris Region» World Class ASD Cluster.



Safran Group occupies over 100 ha on site (with a 260,000 sqm facility for 8,000 jobs) mainly for assembly / civil and military motors testing.



AERONAUTICS AND AEROSPACE

TOP REGIONAL EMPLOYER
12,500 JOBS - 130 COMPANIES
SAFRAN : 2 INDUSTRIAL SITES



ARIANESPACE
1st EUROPEAN
AEROSPACE ENGINE
MANUFACTURER



Digitalization and Robotics

Major groups : **Fanuc Robotics** (world No. 1 in industrial robotics), **SCC** (French leader in IT infrastructure services), **X-Fab** (French manufacturer of semiconductor materials) and **Melexis** (development of chips and sensors electronics, from semiconductors manufactured by X-Fab).

C19 : video game and digital interactions cluster :

Activities : Incubation (partnership with IMT Starter), nursery, R&D, training, provision of a technological platform and offices.

9 user companies. Target of 50 companies by 2022.



A cluster of actors in higher education, research and innovation which are recognized in the field: **Telecom Campus**, **ENSIIE** with the C19 (a cluster dedicated to innovation in the digital sector, and notably, in video games

The “Grande Ecole du numérique” in Evry-Courcouronnes, Grigny and Sénart.
A Data center project in the park of Leonard de Vinci (100,000 m² of premises).

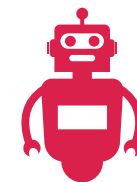
cap·digital
Paris Region

FANUC

Melexis

SCC

X FAB
MIXED-SIGNAL FOUNDRY EXPERTS



FANUC
WORLD LEADER
IN INDUSTRIAL
ROBOTICS

6,700 JOBS
2,000 COMPANIES

Supply chain innovation/E-commerce

Hubs : Zalando's supply chain Hub, Sarenza's logistics' platform, the Cdiscount supply chain website, UPS (a world leader of express transport), and Leroy Merlin logistics' site that extends to 70,000 m², Scadif 80,000 m² logistics site.

A club of supply chain innovation to manage the network of companies in the sector and respond to the issues of stakeholders in the sector (an operational orientation).



The most prominent supply chain names are located and settled in the park of A5-Sénart.



1st POLE In Ile-de France

In terms of Supply Chain
Innovation and Ecommerce

15,000 JOBS
3,600 COMPANIES

Eco-activities

More than **200** corporates in the fields of eco-construction, circular economy and eco-mobility are available. (source : The Service of Corporate Relations GPS- the Economic Observatory of GPS - 2023).

The membership of the agglomeration to the **PEXE*** network and **competitiveness pole Cap Digital**.

*A national network (encompassing clusters, poles of competitiveness, and professional associations) for the development of environmental SME support and energy management.

Among the wide range of corporates in the territory : ATF Gaïa, Euroblock, Dotvision, Watt Earth, Stego Ingenierie, Global Bioenergies, Bati Sens, Iterria, Effysens...

More information is to be found in : grandparissud.ecoentreprises-france.fr

Eco-activities club: a space for the exchange between companies within the sector which is animated by Grand Paris Sud.



**1 An eco nursery
dedicated to young
creators**



SENART ECOPOLE
1ST BUSINESS PARC IN ILE-DE-FRANCE
DEDICATED TO ECO-COMPANIES



Centre ETOILE - Evry-Courcouronnes - DR

RICH TRAINING, Research and Innovation Environment

Education, Higher education, Research and innovation

 **25,000**
STUDENTS
5,000 apprentices

 **2**
UNIVERSITIES
EVRY/PARIS-SACLAY
PARIS-EST CRÉTEIL CAMPUS SÉNART
IUT SÉNART-FONTAINEBLEAU
IUT D'EVRY

 **5**
Master's degrees' SCHOOLS
ENSIIE, INSTITUT MINES-TELECOM
BUSINESS SCHOOL, TÉLÉCOM SUDPARIS,
CENTRE DES MATÉRIAUX - MINES PARISTECH
ICAM GRAND PARIS SUD

 **30**
PUBLIC RESEARCH
LABORATORIES

 **500**
PHD CANDIDATES
AND OVER

 **1,500**
RESEARCHERS

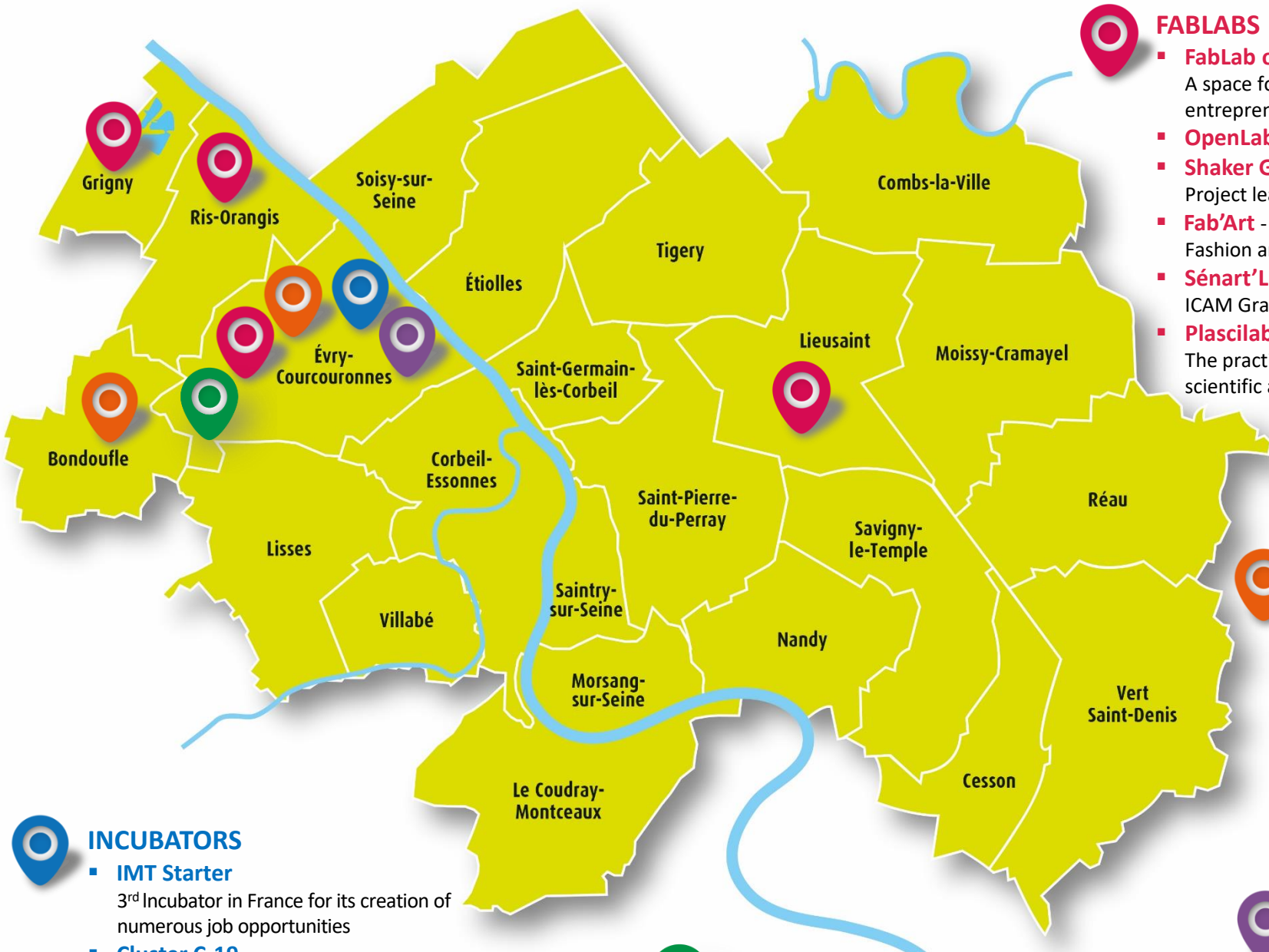
3
INCUBATORS

6
FABLAB

A Campus Fab : training center dedicated to industrial activities - technical platforms about 2300 sqm.
A Production School (by ICAM Grand Paris Sud, Graduate Engineering school)



Évry-Sénart Sciences et Innovation (ESSI) is an association which brings together the actors of higher education, research, and innovation in Grand Paris Sud.



FABLABS

- **FabLab of ETOILE** - Evry-Courcouronnes
A space for prototyping, innovation, and entrepreneurship
- **OpenLab of the IUT** - Evry-Courcouronnes
- **Shaker Genopole** - Evry-Courcouronnes
Project leaders in biotech
- **Fab'Art** - Grigny
Fashion and audiovisual professions
- **Sénart'Lab** - Lieusaint
ICAM Grand Paris Sud Innovation workshop
- **Plascilab** - Ris-Orangis
The practice of digital, technical and scientific activities.

CAMPUSFAB

The industrial school of the future.

CAMPUS OF TRADES AND QUALIFICATIONS OF EXCELLENCE

Industry of the future
Evry-Courcouronnes

INCUBATORS

- **IMT Starter**
3rd Incubator in France for its creation of numerous job opportunities
- **Cluster C-19**
ENSIIE's Resources and Innovation center
- **Incubator of biotechs Genopole corporates**
1st French nursery dedicated to life science and biotech

CMQE Industrie du Futur IDF
Campus des Métiers et des Qualifications d'Excellence

LIVING LAB

- **Evident**
Handicap Santé
- **H-Lab**
Handicap Santé



CORPORATE Services

A pool of trained professionals

A dedicated task force to recruit the best talents :

Introduction and mobilization of the key public and private partners.

Scheduling, attending and coordination of the meetings with :

- Engineering Schools
- Business Schools
- Universities
- Headhunters
- Job Boards
- National Job Agency

A local mission of de Sénart



Maison de l'emploi
et de la formation
Grand Paris Sud

A local mission of Corbeil-Essonnes : MIVE 91
PLIE of Corbeil-Essonnes : PLIE EVE



A local mission and PLIE of Evry :
Dynamique Emploi



A local mission of de Grigny



PLIE Nord-Essonne (Grigny)



A customized step-by-step recruitment offer

- Position briefing
- Research of candidates
- Selection of interviews
- Presentation of the candidates
- Introduction & Follow-up

Corporate Services



Thank you for your attention



DGA Development and Territorial Attractiveness
Department of Economic Development, Attractiveness and Innovation

**grandparis
aménagement**

